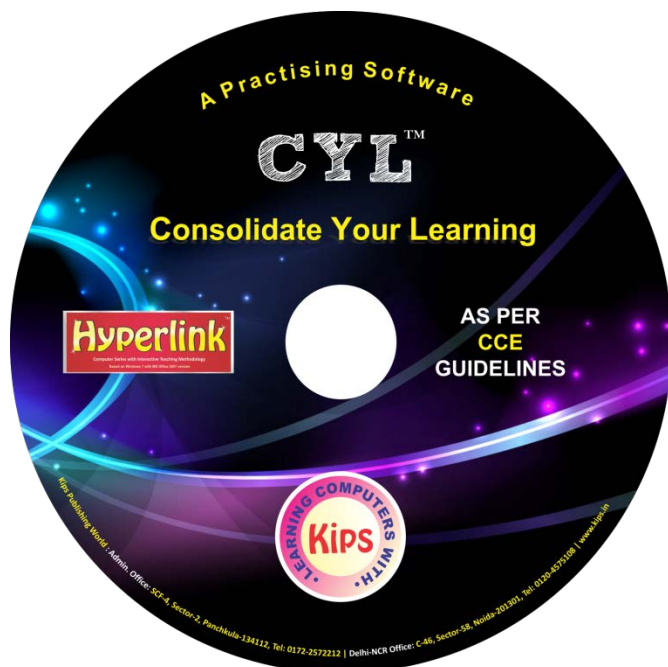


# **CYL (Consolidate Your Learning) ®**



Version 2.0A  
Readme File  
© KIPS PUBLISHING WORLD, 2015.  
All rights Reserved.

**CYL ( Consolidate Your Learning) 2.0 A** is a Practicing Software for Computer students from Classes I - VIII.

## **CONTENTS**

- A. Version Compatibility**
- B. Minimum System Requirements**
- C. Installation**
- D. Launching the CYL 2.0A**
- E. Uninstalling the CYL 2.0A**
- F. CYL Rounds Description**
- G. Frequently Asked Questions (FAQ)**
- H. Network Setup for the CYL Software**

## A. Version Compatibility

**CYL** is compatible with any version of Windows Operating System starting from Windows XP. The software is designed for stand-alone machines. The software setup has an Integrated Setup File which will install all the required components on your system in a single execution.

## B. Minimum System Requirements

### System Level Specifications

- Windows Operating System starting from Windows XP/ Windows 7 and above.
- 128 MB RAM. (Recommended: 256 MB RAM).
- Processor Speed: 1.1 GHz or above.

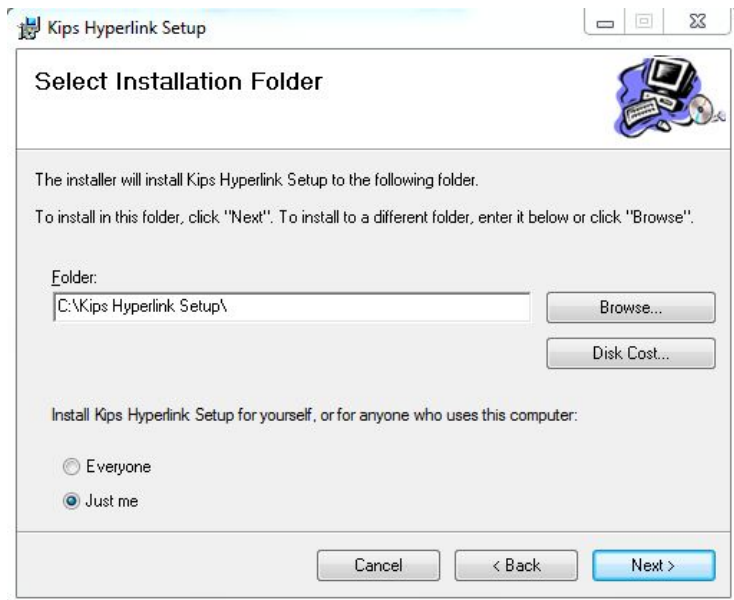
## C. Installation

### 1. From CD-ROM

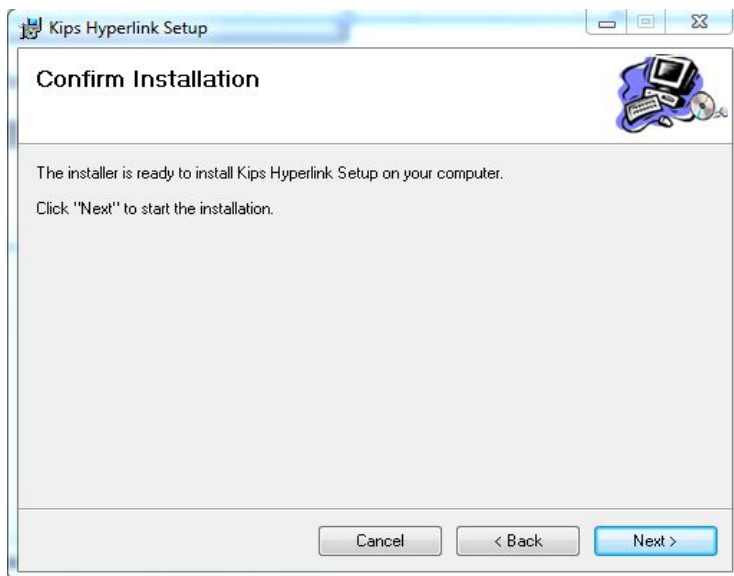
- Place the **CYL** CD-ROM in the CD-ROM Drive.
- The disk is set in Auto-run Mode. If the disk fails to go in Auto-run mode, go to the CD-ROM drive icon in **Computer**. Double click on it to see the CD Contents. Double click on **setup.exe**



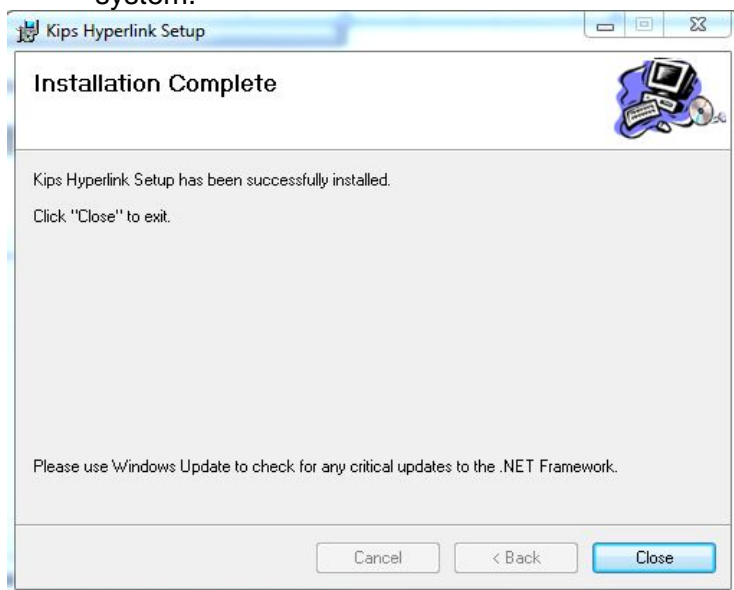
- In the following screen, choose the location where you would like to install the Software. Below the Location text box, choose the option, **Install Kips Hyperlink for 'Everyone'**.



- Select **Next** to start the **CYL** Installation.



- You will get a confirmation message stating that **CYL** has been successfully installed on your system.

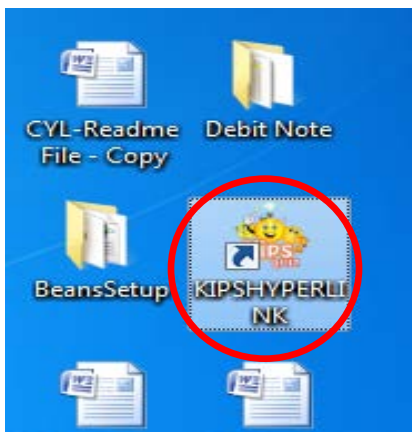


- **.NET Framework** – If the system does not have a .NET Framework patch, the Setup file will install a fresh copy of the same automatically. In case your system has an older version, the Setup file will update the patch. If the .NET Framework present in your system is a more updated version than the minimum requirement; **CYL** Setup will not make any changes to the existing .NET patch.
- **Adobe Flash Player** – The **CYL** CD is accompanied with the latest version of Adobe Flash Player which is mandatory for the proper functioning of **CYL**. If your system does not have Flash Player, please install the same from the folder, **Adobe Flash Player** present in the **CYL** CD. If your system already has an older version of Flash Player, please uninstall it before continuing with the installation of the latest version. You may also install the from Internet

URL ([www.adobe.com/go/getflashplayer](http://www.adobe.com/go/getflashplayer)) Using only Internet Explorer and install flash player

## D. Launching the CYL 2.0A

- Once the Setup finishes, you can launch the **CYL** software using the **KIPS HYPERLINK** shortcut icon on your desktop.



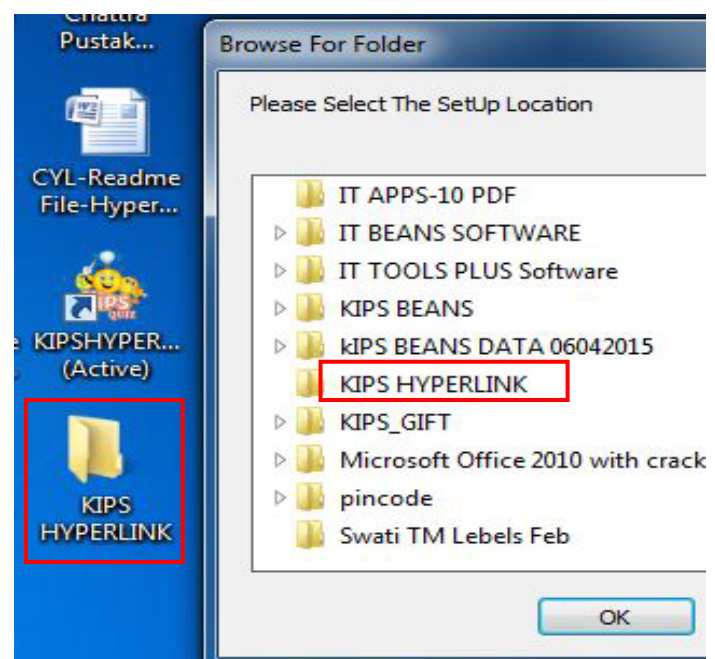
- You can also launch it through: **C:\Program Files\Kips Hyperlink Setup\KIPS HYPERLINK.exe**
- You will be greeted by the Welcome screen of **CYL** which has an introduction about the Software.



**CAUTION:** When you run the software for the first time, the CYL CD should be present in the CD-ROM Drive. This rule is mandatory only for the first-time execution.

## E. From Local Disk

- For running the **setup.exe** from a folder present on your local machine, there is no change in the CYL Setup installation procedure.
- When you run CYL for the first time, the system will ask for the location of the Setup file. Kindly specify the exact location of the setup file on your Local Disk.



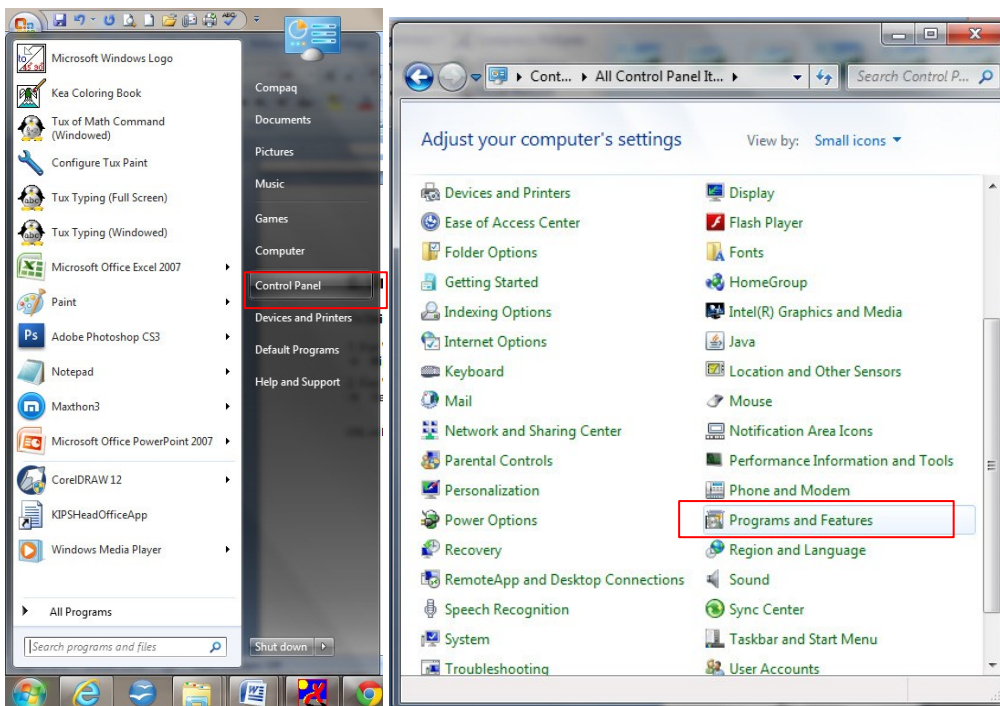
## F. Uninstalling the CYL 2.0A

### To Uninstall The CYL 2.0A:

1. For Windows XP: From the **Start** menu, choose **Control Panel** → **Add or Remove Program** → **Kips Hyperlink**

2. For Windows 7: From **Start** menu, **Control Panel** → **Programs and Features** → **KIPS HYPERLINK SETUP**

Select and click on **Uninstall**.



CYL will be uninstalled from your machine.

## G. CYL Rounds Description

- General Round:** The student has to answer the questions using Drag and Drop Method. He/she will drag the answer to the answer box and drop it. Then the student has to press the **SUBMIT** button. If the answer is correct, **CYL** will give full marks for the question else no marks.

- **G.K. Round:** The student has to attempt the question by typing the answer in the answer box. Then he/she has to press the **SUBMIT** button. If the answer is correct, **CYL** will give full marks for the question else no marks.
- **Rapid Fire Round:** It is a **Time Bound** round. Students will be asked questions in the form of True/False format. After selecting the correct option, he/she has to press the **SUBMIT** button. If the answer is correct, **CYL** will give full marks for the question else no marks.
- **Multiple-Choice Round:** The student has to select the best option out of the given choices. Then he/she has to press the **SUBMIT** button. If the answer is correct, **CYL** will give full marks for the question else no marks.
- **Jumbled Word Round:** Questions in this round will appear as jumbled words. Below every single character, the student will find a small text box. One has to attempt the question by typing a single character in a text box. After entering the character, click on the next text box to write the next letter. You can also press **Tab** key to move to the next text box. Once the student has written all the characters, he/she must press the **SUBMIT** button. If the answer is correct, **CYL** will give full marks for the question else no marks.
- **Example:**

U	S	E	O	M
M	O	U	S	E

- **Fill In the Missing Letters Round:** The student will write the complete answer in the given answer box. Then he/she has to press the **SUBMIT** button. If the answer is correct, **CYL** will give full marks for the question else no marks.

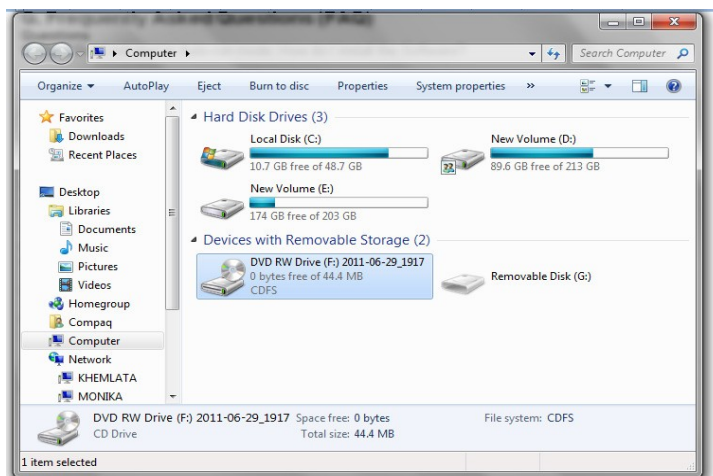
## H. Frequently Asked Questions (FAQ)

### Questions

1. The CD did not start in Auto-run mode. How do I install the Software?

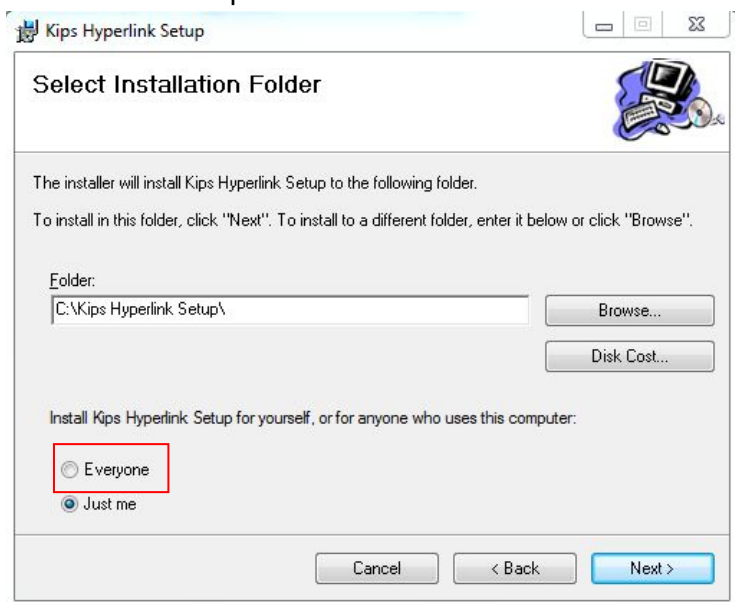
Open **Computer**. Search for the **CD-Drive icon** and double click on it. Click on **setup.exe** and the software will be installed.





2. The software did not run the second time. How did this happen?

During the installation process, it is very important to select the option of '**Install Kips Hyperlink for Everyone**'. If you select the option of '**Install Kips Hyperlink for Me**', the software may run only for the first time in some computers.



3. Sometimes I get an '**Unhandled Exception**' on the Score Sheet of CYL and a '**Cross Symbol**' appears in place of my name. What should I do?

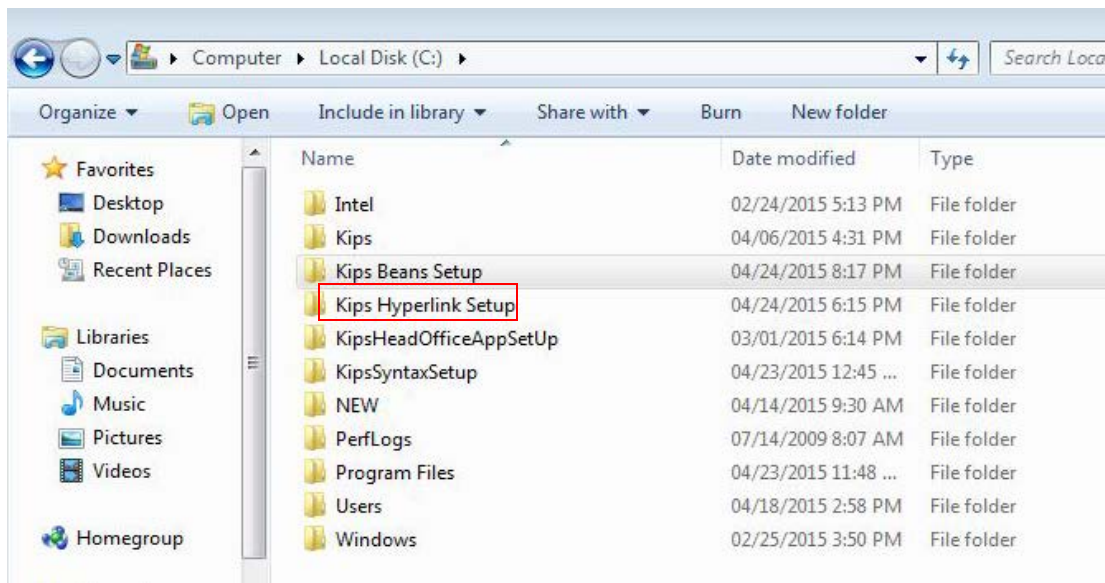
This exception often occurs when you work on a slow machine with bare minimum configuration. This error message can also appear if the number of processes/threads being executed on your local machine is far too many. KIPS suggests you certain tips that might help you to speed up your local machine:

- Always empty the Prefetch Folder after you Log on to the system. The Prefetch folder lies in the following path.  
**C:\Windows\Prefetch**
- One must clean up the unused files from the Hard disk using Disk Cleanup tool from:  
**Start ⇒ All Programs ⇒ Accessories ⇒ System Tools ⇒ Disk Cleanup**

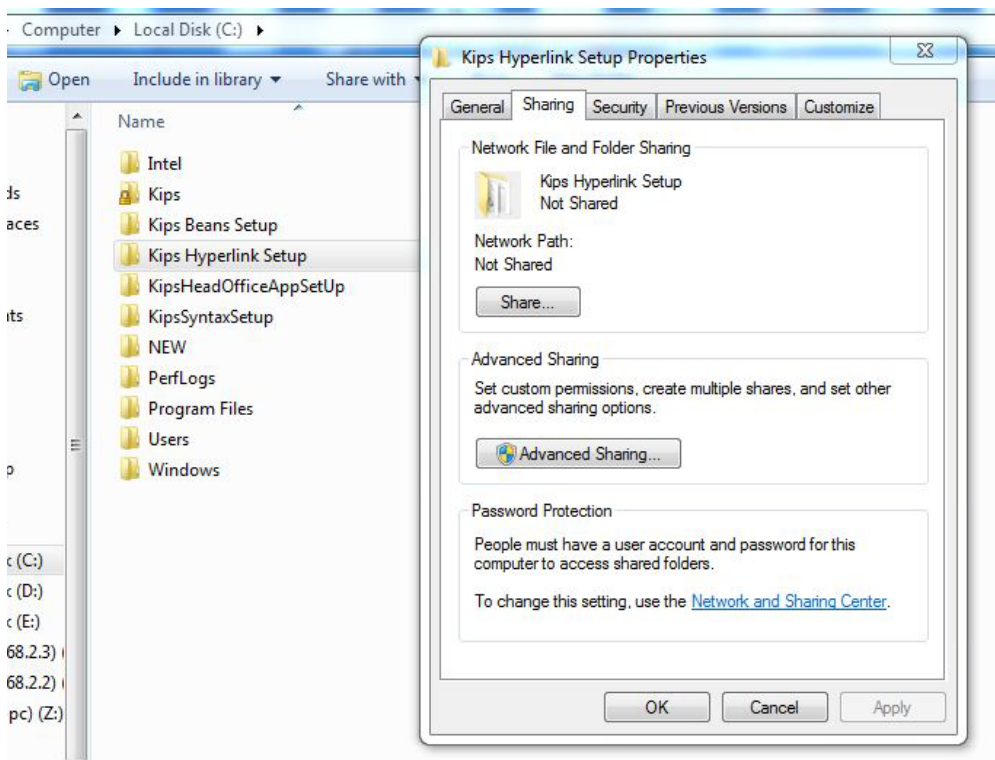
## G. Network Setup for the CYL Software

To Run this software on Local Network (LAN). Follow the given instructions:

- Go to C:/ drive and find Kips Hyperlink Setup folder.

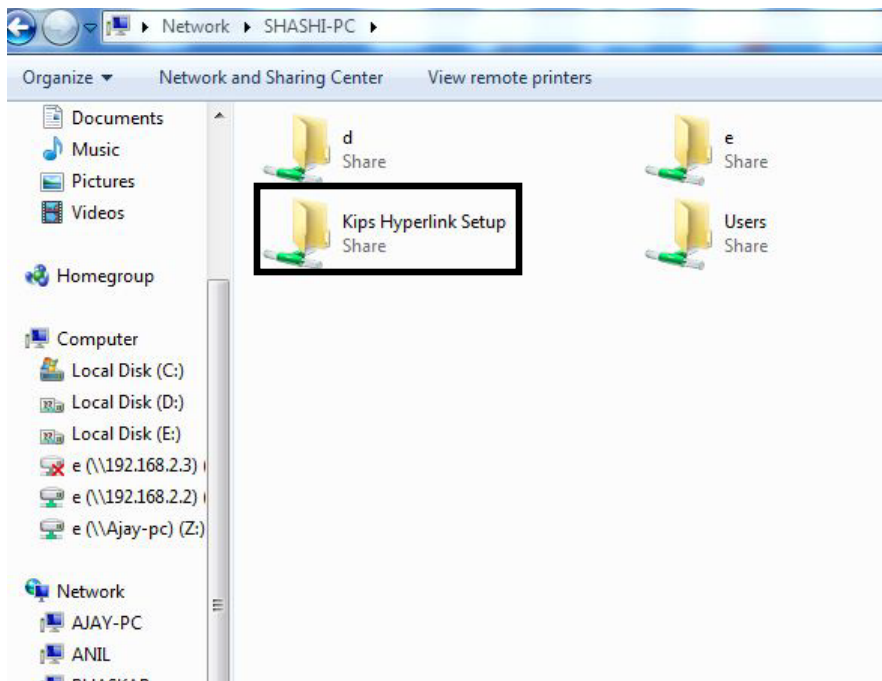


- Select the Kips Hyperlink Setup Folder, Right-click on this folder. A drop-down menu appears select Properties option. Properties Dialog Box appears then select Sharing tab.

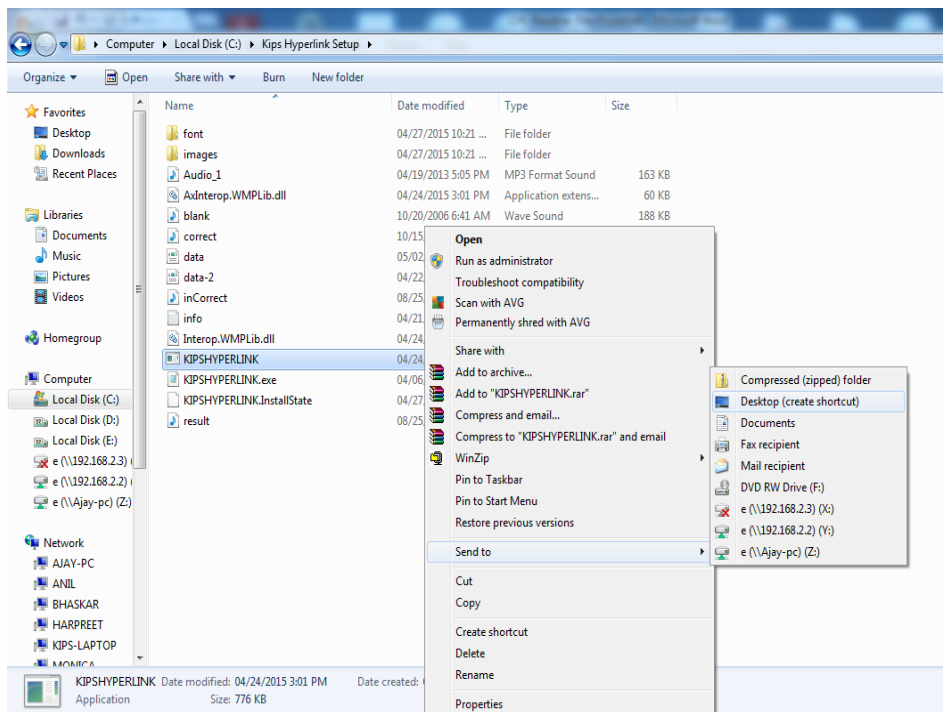


- Click on **Advance Sharing > Share this Folder.**





- After successfully sharing, the entire connected computer can access this folder now.
- Now search the Shared folder on **Local Network (LAN)** and follow the given instructions.



A shortcut of the same will be at your desktop. Now you can run this software

- In case you still have issues running the software on the network, please try the following :

a) Please browse on this CD and install .net 2.0

Adobe Flash Player 10.3	08/09/2011 9:14 AM	File folder	
dotnetfx	08/09/2011 9:14 AM	File folder	
WindowsInstaller3_1	08/09/2011 9:14 AM	File folder	
DATA	06/29/2011 5:29 PM	XML Document	2,785 KB
Kips Setup	06/18/2011 10:37 ...	Windows Installer ...	9,360 KB
SETUP	06/18/2011 10:37 ...	Application	434 KB

b) Install dotnetfx setup.

dotnetfx	09/23/2005 9:25 PM	Application	22,960 KB
instmsia	09/23/2005 9:20 AM	Application	1,670 KB
WindowsInstaller-KB893803-v2-x86	09/23/2005 9:20 AM	Application	2,526 KB

You may also install from internet.



### **Showing Unhandled Exception Error.**

This error occurs only if your system does not have the Updated version of Adobe Flash Player.

URL ([www.adobe.com/go/getflashplayer](http://www.adobe.com/go/getflashplayer))

Open this URL using only Internet Explorer, install Adobe flash player and try to run software again. It is because your system may not have updated version of Adobe Flash Player.



Please mail us at [info@kips.in](mailto:info@kips.in) for any other query and feedback.